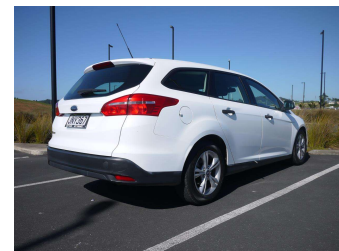
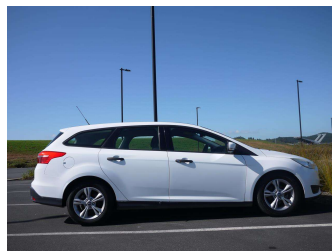
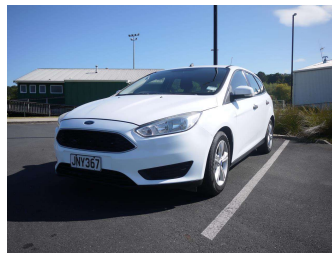


2016 Ford Focus AMBIENTE WAGON 1.6P



Purchase Price **\$9,995**
Includes GST, Registration & Licensing

Indicative repayments
\$56.18 per week*
Based on a 48 month term & 20% deposit.
Total repayments (208) = \$13,683.77

**EZY CARS
EZY FINANCE**

Gain peace of mind with Mechanical Breakdown Insurance. Ask us how.

Top features

- » 2WD
- » ABS Braking
- » Air Conditioning
- » Airbags
- » Alloy Wheels
- » Car Alarm
- » CD Player
- » Central Locking
- » Child seat anchor poin...
- » Cruise Control
- » DOHC 16 Valve
- » Electric Mirrors
- » Electric Mirrors
- » Fog Lights
- » Hands free
- » Rear Wiper
- » Steering Wheel Buttons
- » traction control

Body Style
5 door, Station Wagon

Odometer
177,798 km

Engine
1596 cc, Internal Combustion

Fuel Type
Petrol

Transmission
6 spd DCT Automatic, Front

Wheels
16", Factory Alloys

VIN
WF06XXGCC6FM46932

Interior
Black, Cloth

Safety



Based on 2023 UCSR rating for 12-18 models

Reg No.
JNY367

Ext Colour
White

History
-

Seats
5 seats, Cloth

CO2 Emissions
★★★★☆
168 grams/km

Energy Economy
★★★☆☆☆

Annual fuel cost of \$2,740
7L per 100km

Cost per year is an estimate based on petrol price of \$2.80 per litre and an average distance of 14000 km. Emissions and Energy Economy figures standardised to 3P WLTP.

Stock ID: 1535



Ezy Cars | Phone 09 974 8866 | Email sales@ezycars.nz
158a Lower Cameron Street, Whangarei 0110, New Zealand
www.ezycars.nz

B ★★★★★
4.83 | 280 reviews

* Ezy Cars is not a lender nor a financial adviser. Any amounts displayed should not be seen as an offer of finance or taken as financial advice. The interest rate, fees and loan term used in this calculation may not actually represent those available from lenders. Actual interest rates, fees and loan terms will vary per lender and are typically based on an assessment of your credit risk and responsible lending criteria. Any repayment amounts displayed are indicative only and have been calculated using several other indicative inputs. The interest rate used in this calculation is an arbitrary 13.95%, however exact interest rates vary per lender. The term of the loan used in this calculation is 48 month. Exact terms available vary per lender although options typically include 6, 12, 18, 24, 36, 48 and 60 months. This calculation also includes two typical mandatory fees charged by lenders. These are an account admin fee of \$2.00 per week (other payment frequencies may be available) and a one-off establishment fee of \$603.05. Typically, this fee can be paid upfront or, as in this calculation, be capitalised over the contract term, ie. included in the loan amount. These fees can vary per lender and other non-mandatory fees and charges may also apply. The total amount of repayments has been calculated by multiplying 208 weekly repayments (based on a 48 month term) by the weekly repayment amount of \$56.18 which equals \$13,683.77. This calculator does not consider any of your own personal circumstances and we strongly suggest you seek budgeting advice prior to committing to any loan contract. Responsible lending criteria and lender terms and conditions will likely apply to any finalised loan contract. Proof of security and/or vehicle insurance may also be required before proceeding.