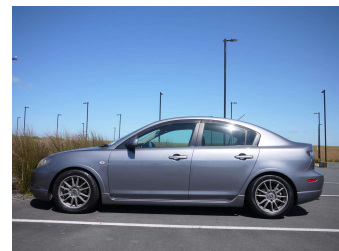


2004 Mazda Axela Sports



Purchase Price

\$11,995

Includes GST, Registration & Licensing

Indicative repayments

\$66.26 per week*

Based on a 48 month term & 20% deposit.
Total repayments (208) = **\$16,180.52**

**EZY CARS
EZY FINANCE**

Gain peace of mind with
Mechanical Breakdown
Insurance. **Ask us how.**

Top features

- » 2WD
- » ABS Braking
- » Air Conditioning
- » Airbags
- » Alloy Wheels
- » Body Kit (Factory)
- » CD Player
- » CD Stacker
- » Central Locking
- » Climate Control
- » DOHC 16 Valve
- » duel VVT I
- » Electric Mirrors
- » Electric Mirrors (retr...
- » Monsoons
- » Spot Lights
- » Steering Wheel Buttons

Body Style

4 door, Sedan

Odometer

174,918 km

Engine

2300 cc, Internal Combustion

Fuel Type

Petrol

Transmission

5-Speed Auto, Front Wheel

Wheels

16", Custom Alloys

VIN

7AT0C13JX16200030

Interior

Black, Cloth

Safety



Based on 2023 UCSR rating
for 03-09 models

Reg No.

JSL133

Ext Colour

Grey

History

Ex-Overseas

Seats

5 seats, Cloth

CO2 Emissions

★ ★ ☆ ☆ ☆ ☆

Energy Economy

☆☆☆☆☆☆

Annual fuel cost not available

Energy Consumption unknown.
Emissions and Energy Economy
figures standardised to 3P WLTP.

Stock ID: 1422

**EZY CARS
EZY FINANCE**

Ezy Cars | Phone 09 974 8866 | Email sales@ezycars.nz
158a Lower Cameron Street, Whangarei 0110, New Zealand
www.ezycars.nz



4.83 | 281 reviews

* Ezy Cars is not a lender nor a financial adviser. Any amounts displayed should not be seen as an offer of finance or taken as financial advice. The interest rate, fees and loan term used in this calculation may not actually represent those available from lenders. Actual interest rates, fees and loan terms will vary per lender and are typically based on an assessment of your credit risk and responsible lending criteria. Any repayment amounts displayed are indicative only and have been calculated using several other indicative inputs. The interest rate used in this calculation is an arbitrary 13.95%, however exact interest rates vary per lender. The term of the loan used in this calculation is 48 month. Exact terms available vary per lender although options typically include 6, 12, 18, 24, 36, 48 and 60 months. This calculation also includes two typical mandatory fees charged by lenders. These are an account admin fee of \$2.00 per week (other payment frequencies may be available) and a one-off establishment fee of \$603.05. Typically, this fee can be paid upfront or, as in this calculation, be capitalised over the contract term, ie. included in the loan amount. These fees can vary per lender and other non-mandatory fees and charges may also apply. The total amount of repayments has been calculated by multiplying 208 weekly repayments (based on a 48 month term) by the weekly repayment amount of \$66.26 which equals \$16,180.52. This calculator does not consider any of your own personal circumstances and we strongly suggest you seek budgeting advice prior to committing to any loan contract. Responsible lending criteria and lender terms and conditions will likely apply to any finalised loan contract. Proof of security and/or vehicle insurance may also be required before proceeding.