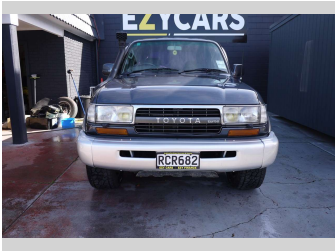


1991 Toyota Land Cruiser



Purchase Price

Includes GST, Registration & Licensing

\$28,995

Indicative repayments

\$151.94 per week*

Based on a 48 month term & 20% deposit.
Total repayments (208) = **\$37,402.88**



Gain peace of mind with
Mechanical Breakdown
Insurance. **Ask us how.**

Top features

- » 1000 RUC minimum
- » 12 Valve
- » 4WD
- » 6 Months Registration
- » Air Conditioning
- » Alloy Wheels
- » Central Locking
- » Electric Mirrors
- » Monsoons
- » New WOF
- » Rear Wiper
- » Running Boards
- » Serviced
- » Tow Bar
- » Turbo Diesel

Body Style

5 door, 4WD

Odometer

396,207 km

Engine

4163 cc, Diesel

Fuel Type

Diesel

Transmission

Auto, 4WD

Wheels

Custom Alloys

VIN

7A8H60H0705009618

Interior

Blue-Grey

Safety



Based on 2024 UCSR rating
for 90-97 models

Reg No.

RCR682

Ext Colour

GREY

History

-

Seats

5 seats, Cloth

CO2 Emissions

☆☆☆☆☆☆

Energy Economy

☆☆☆☆☆☆

Annual fuel cost not available

Energy Consumption unknown.

Stock ID: 1613

EZY CARS
EZY FINANCE

Ezy Cars | Phone 09 974 8866 | Email sales@ezycars.nz
158a Lower Cameron Street, Whangarei 0110, New Zealand
www.ezycars.nz



4.82 | 315 reviews

* Ezy Cars is not a lender nor a financial adviser. Any amounts displayed should not be seen as an offer of finance or taken as financial advice. The interest rate, fees and loan term used in this calculation may not actually represent those available from lenders. Actual interest rates, fees and loan terms will vary per lender and are typically based on an assessment of your credit risk and responsible lending criteria. Any repayment amounts displayed are indicative only and have been calculated using several other indicative inputs. The interest rate used in this calculation is an arbitrary 13.95%, however exact interest rates vary per lender. The term of the loan used in this calculation is 48 month. Exact terms available vary per lender although options typically include 6, 12, 18, 24, 36, 48 and 60 months. This calculation also includes two typical mandatory fees charged by lenders. These are an account admin fee of \$2.00 per week (other payment frequencies may be available) and a one-off establishment fee of \$603.05. Typically, this fee can be paid upfront or, as in this calculation, be capitalised over the contract term, ie. included in the loan amount. These fees can vary per lender and other non-mandatory fees and charges may also apply. The total amount of repayments has been calculated by multiplying 208 weekly repayments (based on a 48 month term) by the weekly repayment amount of \$151.94 which equals \$37,402.88. This calculator does not consider any of your own personal circumstances and we strongly suggest you seek budgeting advice prior to committing to any loan contract. Responsible lending criteria and lender terms and conditions will likely apply to any finalised loan contract. Proof of security and/or vehicle insurance may also be required before proceeding.