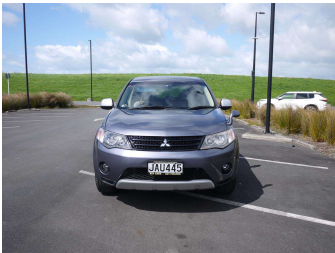


2006 Mitsubishi Outlander



Purchase Price

\$11,995

Includes GST, Registration & Licensing

Indicative repayments

\$66.26 per week*

Based on a 48 month term & 20% deposit.
Total repayments (208) = \$16,180.52

EZY CARS

EZY FINANCE

Gain peace of mind with
Mechanical Breakdown
Insurance. Ask us how.

Top features

» 4WD

» 6 Months Registration

» Air Conditioning

» Airbags

» Central Locking

» Electric Mirrors

» Fog Lights

» Keyless Entry

» Monsoons

» New WOF

» Parking Sensors

» Rear Wiper

» Serviced

» Steering Wheel Buttons

Body Style

5 door, Station Wagon 4x4

Odometer

186,910 km

Engine

2350 cc, Internal Combustion

Fuel Type

Petrol

Transmission

CVT

Wheels

Factory Alloys

VIN

7AT0CJ3MX14100357

Interior

Beige

Safety

5 star

safety rating

Based on 2024 UCSR rating
for 06-12 models

Reg No.

JAU445

Ext Colour

GREY

History

-

Seats

7 seats, Cloth

CO2 Emissions

★ ★ ★ ☆ ☆ ☆

232 grams/km

Energy Economy

★ ☆ ☆ ☆ ☆ ☆

Annual fuel cost of \$3,800
9.7L per 100km

Cost per year is an estimate based
on petrol price of \$2.80 per litre and
an average distance of 14000 km.
Emissions and Energy Economy
figures standardised to 3P WLTP.

Stock ID: 1578



Ezy Cars | Phone 09 974 8866 | Email sales@ezycars.nz
158a Lower Cameron Street, Whangarei 0110, New Zealand
www.ezycars.nz

B

★ ★ ★ ★ ★

4.82 | 303 reviews

* Ezy Cars is not a lender nor a financial adviser. Any amounts displayed should not be seen as an offer of finance or taken as financial advice. The interest rate, fees and loan term used in this calculation may not actually represent those available from lenders. Actual interest rates, fees and loan terms will vary per lender and are typically based on an assessment of your credit risk and responsible lending criteria. Any repayment amounts displayed are indicative only and have been calculated using several other indicative inputs. The interest rate used in this calculation is an arbitrary 13.95%, however exact interest rates vary per lender. The term of the loan used in this calculation is 48 month. Exact terms available vary per lender although options typically include 6, 12, 18, 24, 36, 48 and 60 months. This calculation also includes two typical mandatory fees charged by lenders. These are an account admin fee of \$2.00 per week (other payment frequencies may be available) and a one-off establishment fee of \$603.05. Typically, this fee can be paid upfront or, as in this calculation, be capitalised over the contract term, ie. included in the loan amount. These fees can vary per lender and other non-mandatory fees and charges may also apply. The total amount of repayments has been calculated by multiplying 208 weekly repayments (based on a 48 month term) by the weekly repayment amount of \$66.26 which equals \$16,180.52. This calculator does not consider any of your own personal circumstances and we strongly suggest you seek budgeting advice prior to committing to any loan contract. Responsible lending criteria and lender terms and conditions will likely apply to any finalised loan contract. Proof of security and/or vehicle insurance may also be required before proceeding.